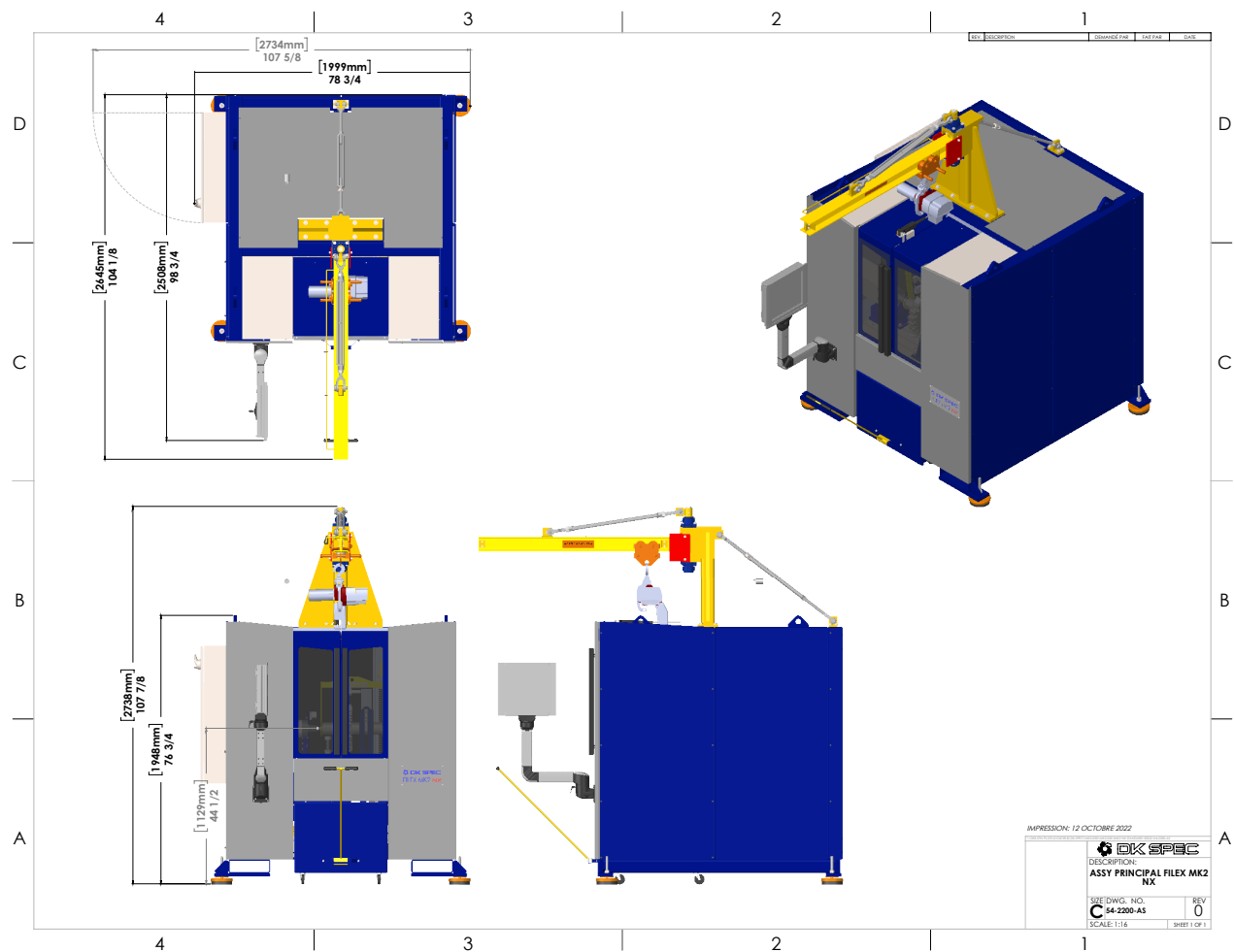
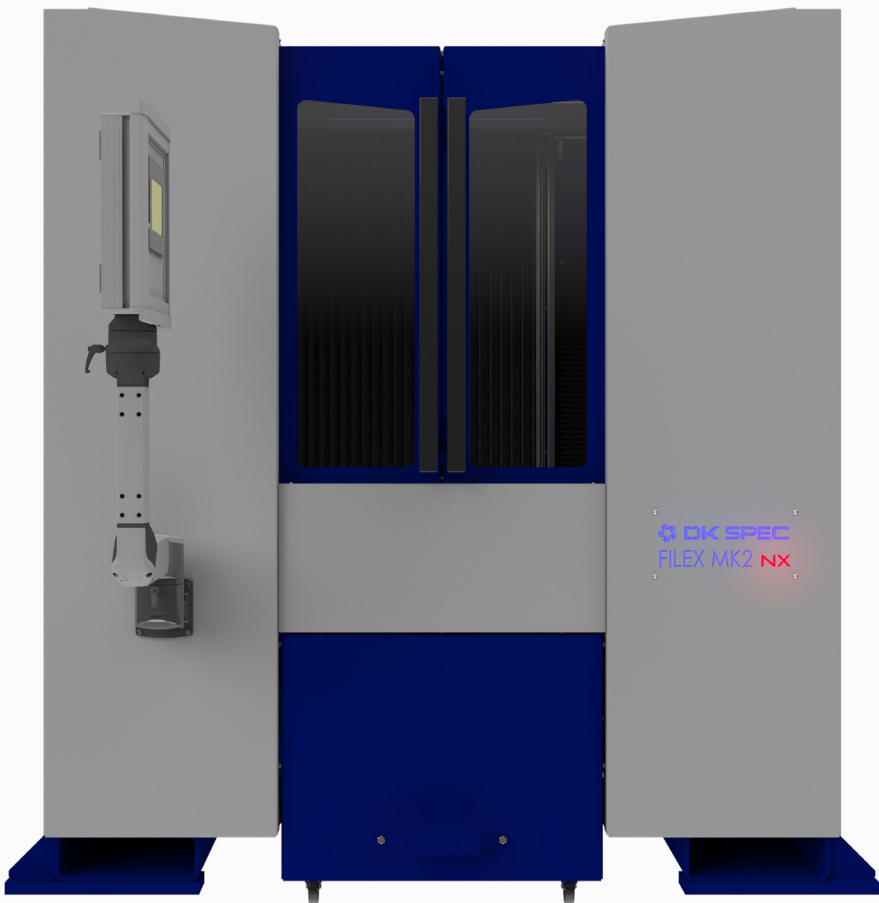


TECH SPECS

Grinding wheel diameter :	up to 12"
Grinding wheel arbor :	1 3⁄8 MIN - with maintenance free pre greased spindle unit
Cutter head diameter :	up to 20"
Cutter head max. length :	17 po (432 mm)
Grinding spindle motor :	5 HP
Variable speed :	900 - 1 800 RPM
Work axis limits :	29 po x 19 po x 17 po (737 mm x 483 mm x 432 mm)
Axis drives :	servomotors and precision ground ballscrews/linear bearings
Index method :	fully programmable zero backlash with mechanical stop
Grinding wheel increments per pass :	0.0001" to 0.010"
Accuracy :	grind planer head within 0.001" for a 20" diameter
Programmable number of knives :	up to 50
Total amount of grinding depth per pass :	up to 0.100"
Flood coolant supply/filtration system :	tank + 1 pump 1/15 HP X 8 1⁄2 GMP pump with LOW LEVEL limit switch
Electrical requirements :	120V - 208V / 3HP / 60 Hz / 43 A
Status light system :	panel mounted color status light (working/completed/error)
Options :	<div>- overhead 1000 lbs/480 KG crane with low speed electric hoist</div> <div>- precision roller for easy planer head adjustment</div>



FILEX^{MK2}
Multifunctional Knife Grinder NX



1060, chemin Olivier
Lévis (Québec) G7A 2M8

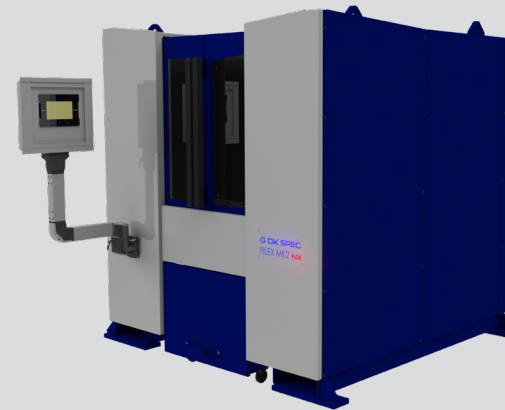
1.888.686.3847
www.dkspec.com

FILEX^{MK₂} NX

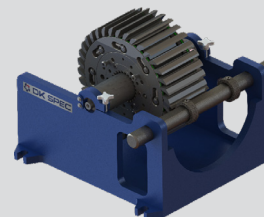
Multifunctional High Performance Knife Grinder

- 4 axis servo
- Sharpening with up to 0.001" precision
- Head diameter up to 20" and 17" long
- Fully linear ball screw bearing
- Use either soft touch display or physical buttons
- Direct drive 5HP motor on grinding wheel
- Maintenance free and user friendly
- High output LED interior lighting
- Leakproof stainless steel interior
- Rustproof full aluminium exterior panels
- Very little handling on repetitions
- New wireless remote control handle for easy setup
- Grind LV side head, straight knife cutterhead and finger jointing head
- Remote access troubleshoot and updates option via private VPN
- Full internal Ethercat® OMRON servo-drives/HMI network
- Fully updatable HMI and PLC software
- Secure automatic operation thru smart electronic door lock
- 1000lbs/480KG overhead crane with low speed electric hoist

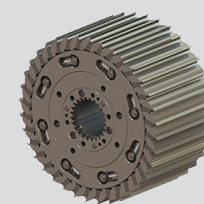
AVAILABLE AS A PERFORMANCE PACKAGE



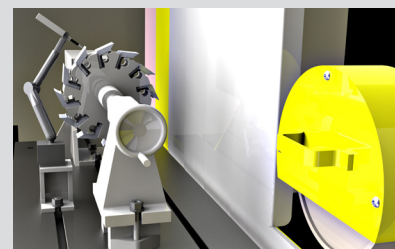
Setup stand-roll



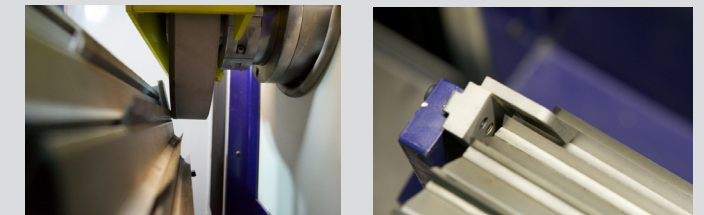
NG2 Planer Head



Sidehead compliant



AUTOMATED INDEXING



TOUCH SCREEN PANEL



The intuitive touch screen panel makes repetitive tasks much easier with very little handling.

The Filex MK² NX is the easiest grinding solution on today's market!

3 AXIS TRAVEL

